

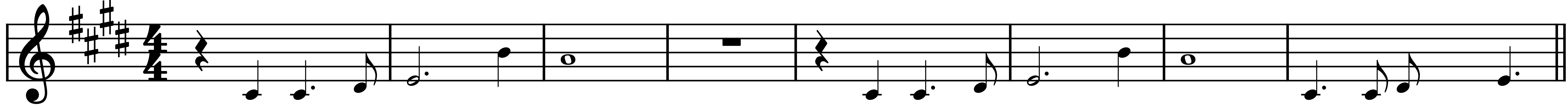
# God Only Knows

from Pet Sounds

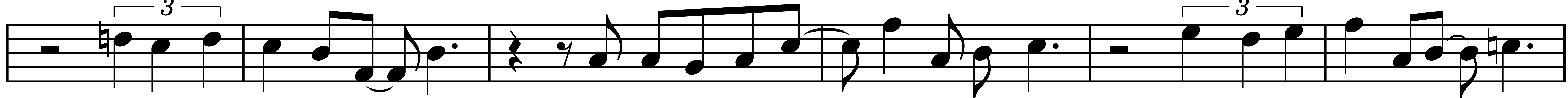
Words and Music by  
BRIAN WILSON  
TONY ASHER

## Intro

A E/G# A E/G# A E/G# F#-7 A/E B/F# C/G

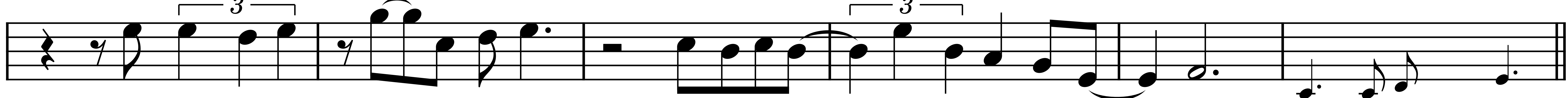


**A** D/A B-6 F#-7 B7/A E/B Co7



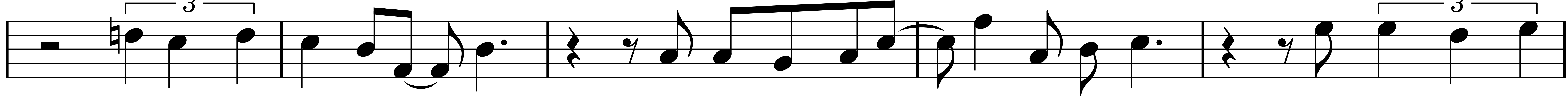
I may not al-ways love you, but long as there are stars a-bove you, you'll nev-er need to doubt it.

E/B A#-7b5 A E/G# F#-7 A/E B/F# C/G



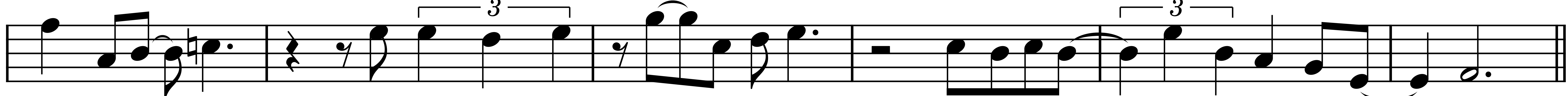
I'll make you so sure a-bout it. God on-ly knows what I'd be with-out you.

D/A B-6 F#-7 B7/A E/B



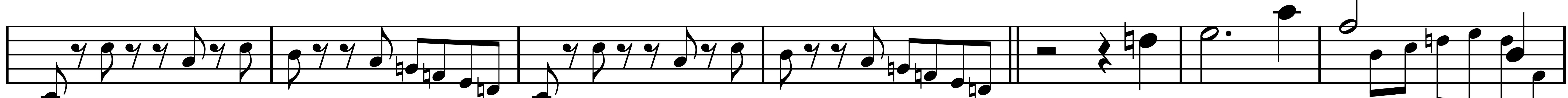
If you should ev-er leave me, well, life would still go on, be-lieve me. The world could show

Co7 E/B A#-7b5 A E/G# F#-7



noth-ing to me, so what good would liv-ing dome? God on-ly knows what I'd be with-out you.

**B** A/E G A/E G **C** G/D E-6 B-7 B-/F#



Ooh, ooh, Ooh,  
Do do do do do do

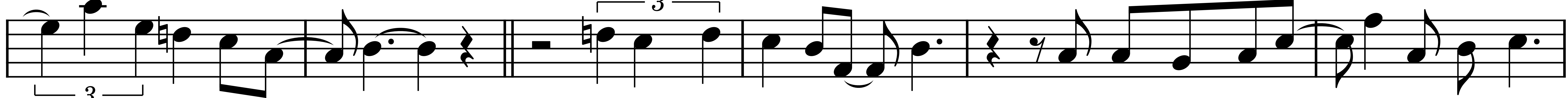
E7/D A/E Fo7 A/E D#-7b5 D



ooh, ooh, ooh, And God on-ly knows  
do. Ba ba ba ba ba ba baba. Baba ba ba ba ba ba ba ooh.

## A

A/C# B-7 D/A B-6 F#-7 B7/A



what I'd be with-out you. If you should ev-er leave me, well, life would still go on, be-lieve me.

**E/B** **Co7** **E/B** **A#-7b5** **A**

The world could show nothing to me, so what good would liv - ing dome? God on - ly knows

**E/G#** **F#-7** **E/G#** **A** **E/G#** **F#-7** **Coda**

what I'd be with - out you. God on - ly knows what I'd be with - out you. (God on - ly knows

**E/G#** **A** **Repeat and fade**

what I'd be with - out God on - ly knows you.)

Playing the chords on a Stradella is entirely possible. Here are some suggestions:

F#m7 = Counterbass of D + A major

Bm6 = B + Bm + Bdim

Co7 = you can "cheat" and just play C + Cdim  
or the full effect with the correct bass note try: Counterbass of G# + F#dim  
(the counterbass of G# is B-double sharp which equals C!)

A#m7b5 = Counterbass of F# + C# minor

D#m7b5 = Counterbass of B + F# minor

Fo7 = "cheat" with F+ Fdim or  
Counterbass of C# + Bdim

Bm7 = Counterbass of G + D major

four chord qualities:

m7 = counterbass + major next row up

m7b5 = counterbass + minor next row up

m6 = root + minor + diminished

dim7 = counterbass + dim two rows down