

Introduction to Chapter 4

There are nine different Bass Keyboard Diagrams shown in the following chapter, but it is only necessary for the student to study and memorise that one which is suitable to his instrument.

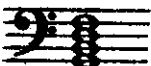
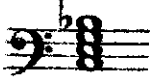
It is not sufficient for the student to have merely a passing knowledge of the Keys on the Bass Keyboard. He must get to know them thoroughly, for without such knowledge he can never hope to render any composition correctly and convincingly.

A little tedious work may be experienced by the student at first in trying to locate some of the Bass Keys. This is undoubtedly due to the fact that the vision is obscured when the instrument is in a playing position. Therefore, this little hint may prove useful to beginners:—

Mark a little cross on the Key (C) on the Row of Fundamental Bases with a nail file or some other instrument. (e.g. ⊗) Just sufficient to allow you to feel it when the instrument is in a playing position. Then use the marked Bass Key as a landmark to obtain your other bases and chords. This hint may seem primitive but it is, however, none the less effective.

Concerning those Piano Accordion Bass Keyboards which include rows of Dominant and Diminished 7ths, I might at this point save a considerable amount of confusion.

The chords are *not* the Dominant and Diminished 7th chords of their equivalents on the Row of Fundamental Bases *but take their designations from their equivalents on that Row.* (See diagram of 108 Bass Keyboard Stradella's-System)

For instance the chord of the Dominant 7th of C is  but the chord of C seventh is 

108 Bass Keyboard (Soprani's System)

Bottom
End

(MAJOR THIRDS) COUNTER BASSES	①	A	D	G	B \sharp	E \sharp	A \sharp	D \sharp	G \sharp	C \sharp	F \sharp	B	E	A	D	G	C	F	B \flat	E \flat	A \flat	D \flat	G \flat	B \flat	
FUNDAMENTAL BASSES	②	E \sharp	A \sharp	D \sharp	G \sharp	C \sharp	E \sharp	B	E	A	D	G	C	F	B \flat	E \flat	A \flat	D \flat	G \flat	B \flat	E \flat	A \flat	D \flat	G \flat	B \flat
MAJOR CHORDS	③	E \sharp	A \sharp	D \sharp	G \sharp	C \sharp	F \sharp	B	E	A	D	G	C	F	B \flat	E \flat	A \flat	D \flat	G \flat	B \flat	E \flat	A \flat	D \flat	G \flat	B \flat
MINOR CHORDS	④	E \sharp	A \sharp	D \sharp	G \sharp	C \sharp	F \sharp	B	E	A	D	G	C	F	B \flat	E \flat	A \flat	D \flat	G \flat	B \flat	E \flat	A \flat	D \flat	G \flat	B \flat
DOMINANT 7ths	⑤	E \sharp	A \sharp	D \sharp	G \sharp	C \sharp	F \sharp	B	E	A	D	G	C	F	B \flat	E \flat	A \flat	D \flat	G \flat	B \flat	E \flat	A \flat	D \flat	G \flat	B \flat
DIMINISHED 7ths	⑥	E \sharp	A \sharp	D \sharp	G \sharp	C \sharp	F \sharp	B	E	A	D	G	C	F	B \flat	E \flat	A \flat	D \flat	G \flat	B \flat	E \flat	A \flat	D \flat	G \flat	B \flat

Top
End

The construction of the notation on this Bass Keyboard is known as Soprani's System, and, as it will be seen, is arranged in the inverse order of Stradella's System.

Sometimes another row of Keys is utilized in the Soprani and Stradella Systems. This row, if included, would be situated above Row ① and would contain the Minor Counterbasses or Minor Thirds.

96 Bass Keyboard (Stradella's System)

Bottom
End

Top
End

(MAJOR THIRDS)
COUNTER BASSES

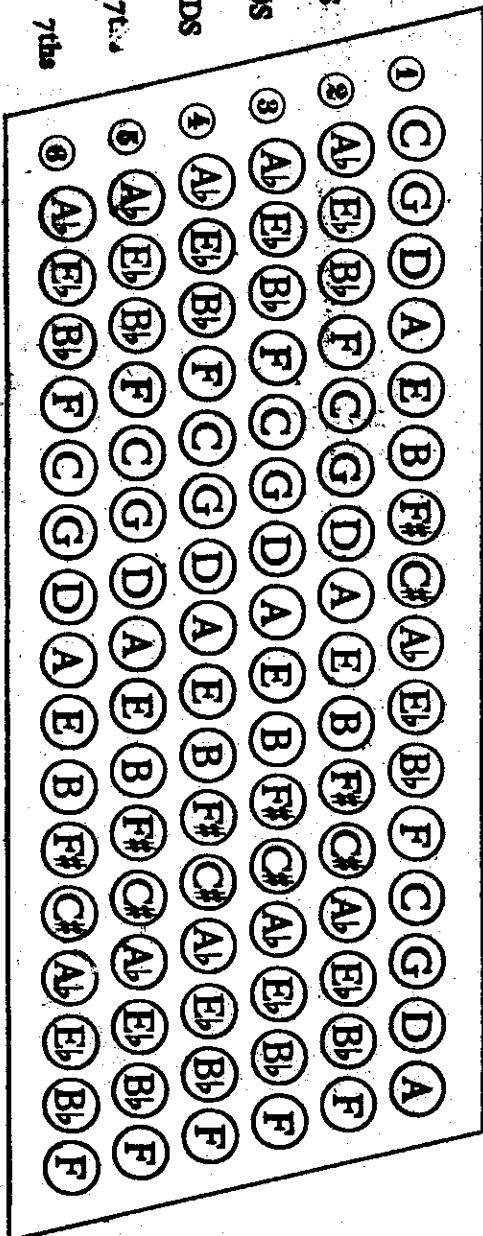
FUNDAMENTAL BASSES

MAJOR CHORDS

MINOR CHORDS

DOMINANT 7ths

DIMINISHED 7ths

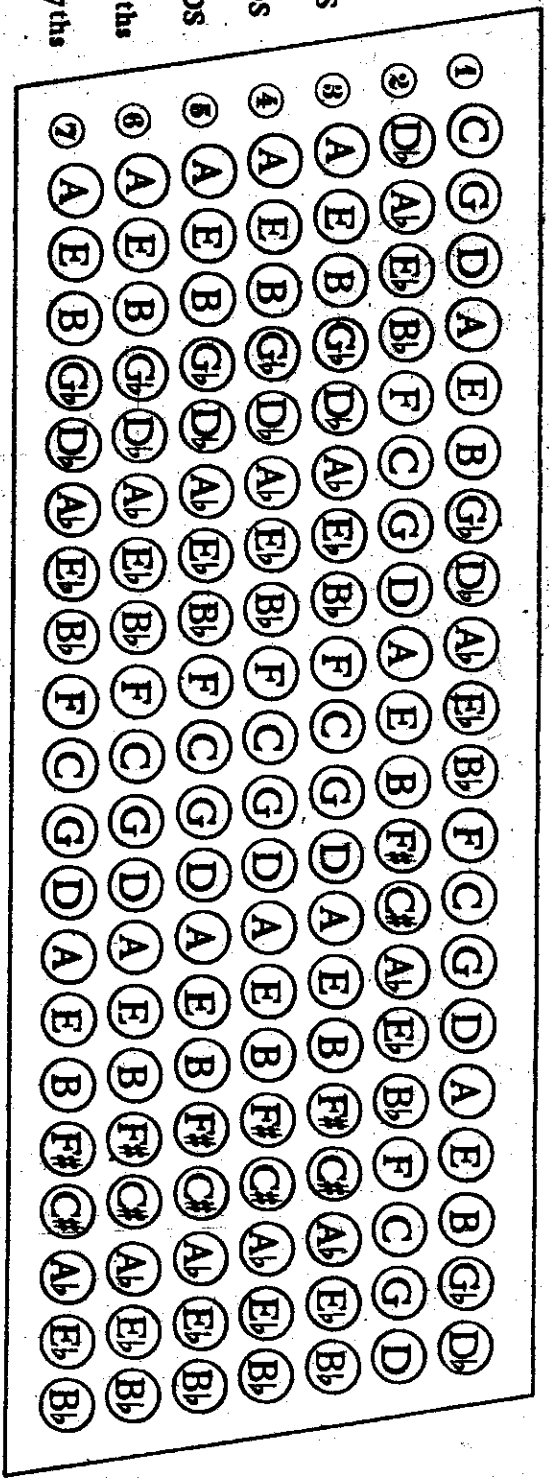


Bass Keyboards of the "Stradella's American System"

The following four instruments (140, 120, 80 and 48 Bass Keyboard) are very popular in America. They are excellent instruments and are manufactured by R. Galanti & Bros., of New York. The most practicable and complete with regard to musical possibility are those with 140 and 120 Bass Keys. Those others with 80 and 48 Bass Keys, although not allowing the same scope for execution, are nevertheless equipped with all Keys necessary for the needs of the average player.

140 Bass Keyboard (Stradella's American System) (Seven Rows)

Bottom
End

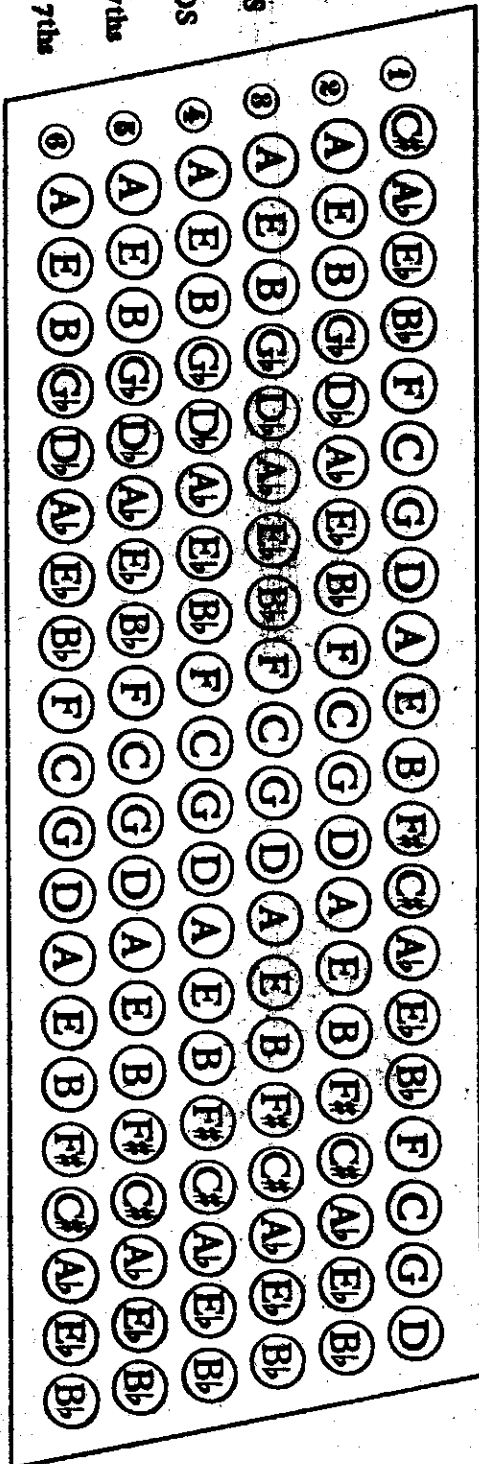


Top
End

120 Bass Keyboard (Stradella's American System)

This Bass System is employed on the HOHNER instruments and numerous other makes.

Bottom
End



Top
End

(MAJOR THIRDS)
COUNTER BASSES

FUNDAMENTAL BASSES

MAJOR CHORDS

MINOR CHORDS

DOMINANT 7ths

DIMINISHED 7ths

80 Bass Keyboard (Stradella's American System)

This Bass System is employed on the HOHNER instruments and numerous other makes.

Bottom
End

Top
End

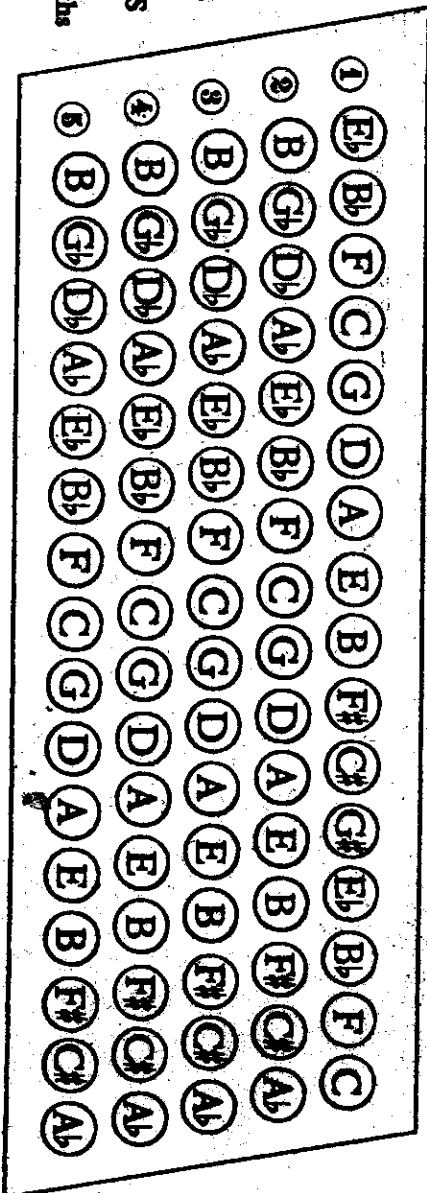
(MAJOR THIRDS)
COUNTER BASSES

FUNDAMENTAL BASSES

MAJOR CHORDS

MINOR CHORDS

DOMINANT 7ths

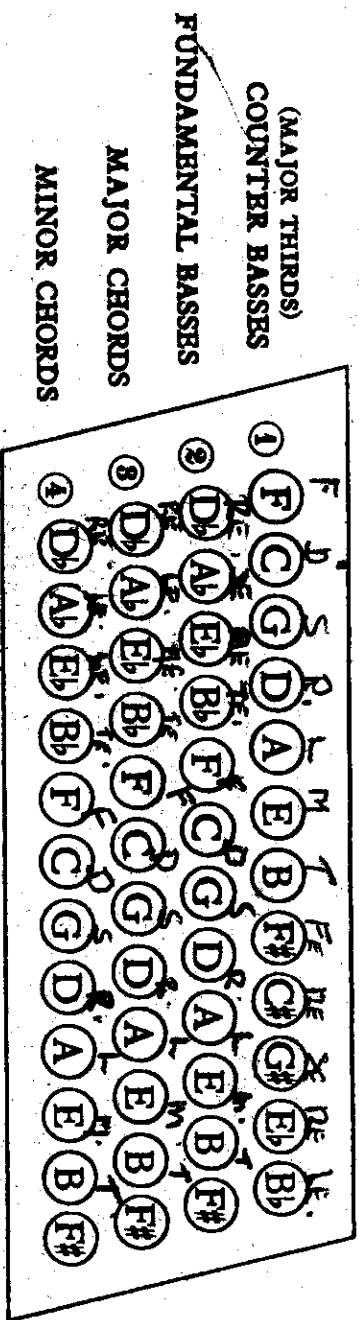


48 Bass Keyboard (Stradella's American System)

This Bass System is employed on the HOHNER instruments and numerous other makes.

Bottom
End

Top
End



(MAJOR THIRDS)
COUNTER BASSES

FUNDAMENTAL BASSES

MAJOR CHORDS

MINOR CHORDS

Some 48 Bass Keyboard Accordions do not possess a row of Counterbasses, but have instead, a row of Dominant 7th Chords. Those Keyboards would therefore read:-

- Row ① FUNDAMENTAL BASSES (as in the 2nd Row of above diagram)
- Row ② MAJOR CHORDS (as in the 3rd Row of above diagram)
- Row ③ MINOR CHORDS (as in the 4th Row of above diagram)
- Row ④ DOMINANT 7ths

60 Bass Keyboard (Stradella's System)

Bottom
End

Top
End

(MAJOR THIRDS)
COUNTER BASSES

FUNDAMENTAL BASSES

MAJOR CHORDS

MINOR CHORDS

DOMINANT 7ths

